

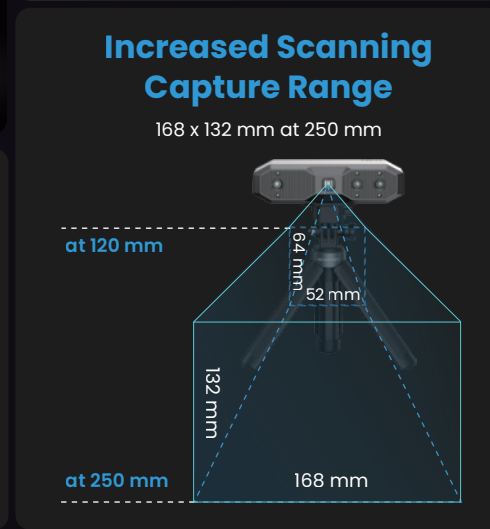
Product Name	MINI 2 3D Scanner
Technology	Dual-camera Blue Structured Light
Single-frame Precision	Up to 0.02 mm
Single-frame Accuracy	Up to 0.05 mm
Fused Point Distance	Up to 0.02 mm
Working Distance	120 - 250 mm
Single Capture Area at Nearest Distance	52 x 64 mm at 120 mm
Single Capture Area at Furthest Distance	168 x 132 mm at 250 mm
Minimum Scan Volume	10 × 10 × 10 mm
Scanning Speed	Up to 16 fps
3D Light Source	Class 1 Blue Light
Position Sensors	9-axis IMU
Output File Formats	PLY, OBJ, & STL
Tracking Methods	Feature/Marker
Outdoor Scanning	No
Color Scanning	Yes
Dimensions (L x W x H)	132 x 53 x 36 mm
Compatible Operating Systems	Window 10/11 (64-bit), Android, iOS, macOS
White Flash LEDs	Yes
Connector Type	USB Type-C

1. Precision is how close repeated measurements of the same object are to each other. Accuracy is how close a measured value is to the actual (true) value. They were both acquired in a controlled lab environment. Actual results might vary, subject to the operation environment.
2. Class 1 Laser: Avoid direct eye exposure for extended periods! Refer to Standards for Class 1 Lasers for details.
3. Outdoor scans should avoid direct sunlight.
4. Some products have flashing lights, which may not be suitable for people with photosensitive epilepsy.



Up to **0.02 mm**  
Metrology-grade Precision

Position Sensors  
**9-axis IMU**



CPU  
**2 core, 1.8 GHz**



**USB Type-C**

Up to **16 fps**  
Fast Scanning Speeds

REVOPOINT



## MINI 2 3D Scanner

Unleash Precision, Embrace Innovation.

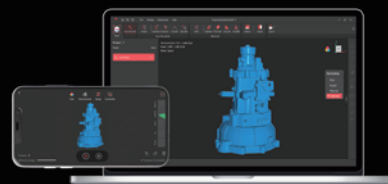


Revopoint MINI 2 is a new industrial-grade blue light 3D scanner offering metrological-grade precision with its powerful hardware. It's optimized to capture every tiny detail for quality control, customized healthcare solutions, artistic design, XR modeling, and many more applications.

## Runs on Nearly Everything

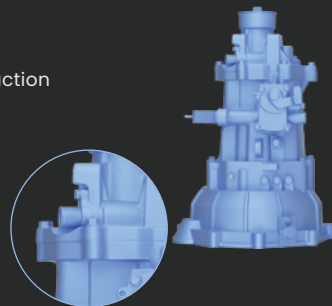
Revo Scan 5 is your portal to intuitive 3D scanning and powerful editing. And it runs on nearly everything, with full support for iOS, Android, Windows, and macOS devices. Export your models in STL, PLY, or OBJ formats for compatibility with most CAD, 3D modeling, and slicer software.

### Revo Scan 5



### Quality Control

Speed up projects and production by reliably capturing every dimension, surface flaw, and imperfection with clarity.



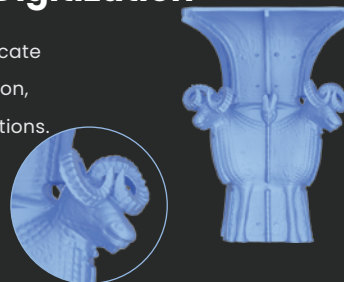
### Customized Healthcare

Quickly capture dental molds or ear canals to create perfectly fitting customized healthcare solutions.



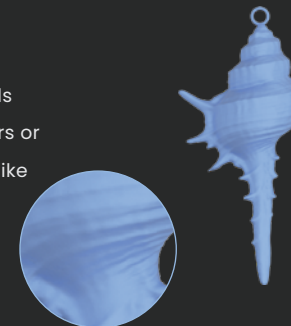
### Historical Relic Digitization

Capture historical items' intricate details and color for restoration, preservation, or digital exhibitions.



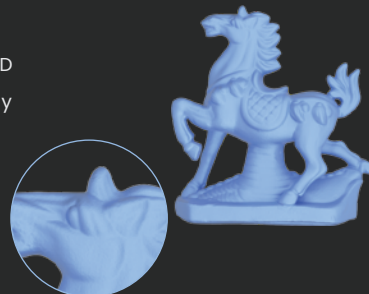
### Artistic Design

Create ready-to-use 3D models from organic shapes like flowers or shells for your design projects like jewelry design or action figure redesign.



### 3D Modeling

Transform your XR project's 3D modeling pipeline with quickly created lifelike 3D assets.



### Foster Innovation

Nurture design creativity with MINI 2's ease of use, providing a great platform for learning the ins and outs of 3D scanning.

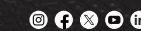


## About Us

Revopoint is a global leader in scanning technology designed to make 3D scanning accessible to people everywhere. Powered by robust R&D investment and state-of-the-art production processes, we've created cutting-edge technologies ranging from micro-structured optical chips to high-precision 3D vision algorithms.

We're focused on global growth through innovation, with our expanding product line-up being sold worldwide. And we're ready to move forward to meet diverse needs and challenges with our solid foundations and innovative spirit.

## REVOPPOINT



+1 (888) 807-3339

sales@revopoint3d.com

